

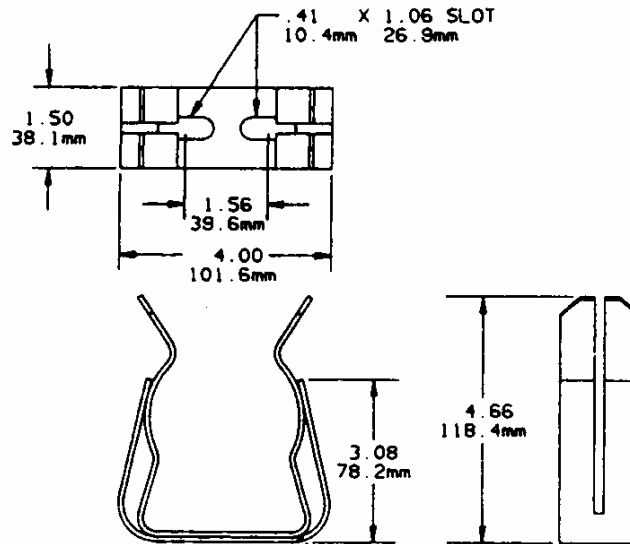
Norberg~IES

www.powerfuse.com

147 South 122nd East Ave., Tulsa, OK 74128 918.438.0744 fax 918.438.0746

CUT SHEET #2

SIZE D & DD FUSE CLIP



Spring-reinforced clip with accommodate and 3" diameter, one and two barrel medium voltage ferrule-types fuses. The clip and reinforcing spring are intended to be bolted to a copper bus bar through two .41" x 1.06" slots. A minimum copper-buss cross section of 1/4" x 1-1/2" is recommended for maximum fuse ratings of 24R and 450E.