

Circuit Breaker Lighting & Power Distribution Panel Boards

Explosionproof and Dust-Ignitionproof



ENCLOSURES: The housings are copper-free cast aluminum alloy. The housings are Adalet XCE series and have precision ground cover and body joints.

The design offers sufficient gutter space on sides to allow through wiring and easy lug connection. All enclosures are furnished with hinges, stainless steel cover bolts and are provided with Nema 4 gasketing. All covers are removable for clear access to breakers and gutter space. The compact design of rectangular housings permits close grouping on switch racks and other structures. No additional space is required for cover removal except from the front.

MECHANICAL FEATURES: The front mounted power panel and lighting panel branch breaker handles can be padlocked either in "off" or "on" position. All breaker handles are spring loaded allowing closing of the cover with breaker toggle in any position. Operating handle shafts have "V" ring gaskets for watertight application.

ELECTRICAL FEATURES: Breaker panel chassis, featuring bolt-on circuit breakers, are made by Cutler-Hammer. Chassis for the power distribution XPB2 series provides 480V/277 volt connections. The circuit breakers are rated for 480 volt max.

The Adalet lighting panel board XPB1 series offers 15 through 60 amps, 120, 240 volt bolt on circuit breakers with ground and insulated neutral bars as standard features. The Cutler-Hammer Industrial Ground Fault Circuit Protectors (GFCI 5mA, GFEPD 30mA) and switching neutral breakers are available as optional features.

Compliances:

UL, cUL Classified Enclosure
UL Standard 1203
CSA Standard C22.2 No. 30

Class I, Groups B, C, D
Class II, Groups E, F, G
Class III
NEMA 4, 7, 9

Approvals:

Enclosure Certifications



E81696

8A-1

Circuit Breaker Lighting Panel Boards

Explosionproof and Dust-Ignitionproof

CLASS I, GROUP B, C, D; CLASS II, GROUPS E, F & G; CLASS III, NEMA 4, 7 & 9

Explosionproof circuit breaker lighting panelboards use cast aluminum alloy housings with hinged cover. External operating handles can be padlocked in "on" or "off" position. Incorporates Cutler-Hammer bolt-on breakers @ 240 volt max. Top feed standard.

8A-2

BACK FED MAIN BREAKER PANELBOARDS
120/240 VOLT, 1 PHASE 3 WIRE, SOLID NEUTRAL
CHASSIS WITHOUT BRANCH BREAKERS OR OPERATING HANDLES
10,000 AMPERE INTERRUPTING CAPACITY (SYM.)

Number of Avail. Breakers	MLO / BFD	Catalog Number	Main Breaker Amperes	Box Size
10	BFD	XPB1-121 B1	100	A
16	BFD	XPB1-181 B1	100	A
22	BFD	XPB1-241 B1	100	B

BACK FED MAIN BREAKER PANELBOARDS
120/208 VOLT, 3 PHASE 4 WIRE, SOLID NEUTRAL
CHASSIS WITHOUT BRANCH BREAKERS OR OPERATING HANDLES
10,000 AMPERE INTERRUPTING CAPACITY (SYM.)

Number of Avail. Breakers	MLO / BFD	Catalog Number	Main Breaker Amperes	Box Size
9	BFD	XPB1-123 B1	100	A
15	BFD	XPB1-183 B1	100	A
21	BFD	XPB1-243 B1	100	B

Circuit Breaker Lighting Panel Boards

Explosionproof and Dust-Ignitionproof

MAIN LUG ONLY PANELBOARDS
1 PHASE 3 WIRE 120/240 VOLT TOP FEED MAIN LUG ONLY
CHASSIS WITHOUT BRANCH BREAKERS OR OPERATING HANDLES
10,000 AMPERE INTERRUPTING CAPACITY (SYM)

Number of Breakers	Catalog Number	Main Lug Amperes	Box Size
12	XPB1-121L1	100	A
18	XPB1-181L1	100	A
24	XPB1-241L1	100	B
24	XPB1-241L2	225	B
30	XPB1-301L2	225	D
36	XPB1-361L2	225	D

MAIN LUG ONLY PANELBOARDS
3 PHASE 4 WIRE 120/208 VOLT TOP FEED MAIN LUG ONLY
CHASSIS WITHOUT BRANCH BREAKERS OR OPERATING HANDLES
10,000 AMPERE INTERRUPTING CAPACITY (SYM)

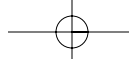
Number of Breakers	Catalog Number	Main Lug Amperes	Box Size
12	XPB1-123L1	100	A
18	XPB1-183L1	100	A
24	XPB1-243L1	100	B
24	XPB1-243L2	225	B
30	XPB1-303L2	225	D
36	XPB1-363L2	225	D

How to order:

- A) Specify catalog number and voltage
- B) Number of operator handles, single pole, two pole and three pole as required.
- C) Circuit breakers, number of poles and ampere rating.

Unused spaces will be plugged. Top feed standard.

8A-3



Circuit Breaker Lighting Panel Boards

Explosionproof and Dust-Ignitionproof

MODIFICATIONS AND OPTIONS

8A-4

Branch Breakers - Operating Handles - Components

CIRCUIT BREAKER OPERATOR HANDLES INSTALLED IN XPB1 PANEL BOARDS

Catalog Number	Description	Weight Each
XPB1-H1	For single pole BAB breakers	1/4 lb.
XPB1-H2	For two pole BAB breakers	1/4 lb.
XPB1-H3	For three pole BAB breakers	1/4 lb.
XPB1-GL	For single pole GFI ground	1/4 lb.
XPB1-GR	Fault breakers (specify left or right side)	1/4 lb.

BRANCH CIRCUIT BREAKERS INSTALLED IN XPB1 PANEL BOARDS: BOLT-ON THERMAL MAGNETIC BREAKERS 120/240 VOLT 10,000 AMPERE I.C.

Catalog No.	Description
XPB1-1*	1 pole breaker (available in 10-70 amp)
XPB1-2*	2 pole breaker (available in 10-100 amp)
XPB1-3*	3 pole breaker (available in 10-100 amp)

*Add ampere rating of the branch breaker when ordering.

GROUND FAULT CIRCUIT PROTECTORS 120/240 VOLT 10,000 AMPERE I.C. STD. 22,000 AMPERE I.C. OPTIONAL

Catalog No.	Description
XPB1-1GFCl*	1 pole GFCI Breaker 5 MA Sensitivity
XPB1-2GFCl*	2 pole GFCI Breaker 5 MA Sensitivity
XPB1-1GFEPD*	1 pole GFCI Breaker 30 MA Sensitivity
XPB1-2GFEPD*	2 pole GFCI Breaker 30 MA Sensitivity

Above Available with special application Bell Alarm or Auxiliary Switch.

*Add ampere rating of the branch breaker when ordering

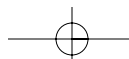
BOLT-ON SWITCHING NEUTRAL BREAKERS 120/240 VOLT 10,000 AMPERE I.C.

Catalog No.	Description
XPB1-N1*	1 pole switching to neutral Requires two spaces (available in 15-30 amp)
XPB1-N2*	2 pole switching to neutral Requires three spaces (available in 15-30 amp)

*Add ampere rating of the branch breaker when ordering

OPTIONAL FEATURES MODIFICATIONS:

Suffix Letter	Description
E	Breather Drain (not type 4)
EE	Breather and drain (not type 4)
L1	Epoxy Coating Outside
L2	Epoxy Coating Inside/Outside
NP	Lamacoid Nameplate
CU	Copper Bus Bar
Q	Quad-Lead Bolts



Circuit Breaker Power Distribution Panel Boards

Explosionproof and Dust-Ignitionproof

CLASS I, GROUPS B, C & D; CLASS II, GROUPS E, F & G; CLASS II, NEMA 4, 7 & 9

Explosionproof circuit breaker power panelboards use cast aluminum alloy housings with hinged cover. External operating handles can be padlocked in "on" or "off" positions. Incorporates Cutler-Hammer bolt-on breakers @ 480 volt max. Top feed standard.

8A-5

BACK FED MAIN BREAKER PANELBOARDS 277/480 VOLT, 3 PHASE 4 WIRE, SOLID NEUTRAL CHASSIS WITHOUT BRANCH BREAKERS OR OPERATING HANDLES 14,000 AMPERE INTERRUPTING CAPACITY (SYM.)

Number of Avail. Breakers	MLO / BFD	Catalog Number	Main Breaker Amperes	Box Size
9	BFD	XPB2-123B1	100	A
15	BFD	XPB2-183B1	100	A
21	BFD	XPB2-243B1	100	B

100 ampere main lugs conductor size #12 -1/0 CU/AL.
225 ampere main lugs conductor size #6-300 MCM CU/AL.

How to order:

- A) Specify catalog number and voltage
- B) Number of operator handles, single pole, two pole and three pole as required.
- C) Circuit breakers, number of poles and ampere rating

Unused spaces will be plugged. Top feed standard.

MAIN LUG ONLY PANELBOARDS 277/480 VOLT, 3 PHASE 4 WIRE CHASSIS WITHOUT BRANCH BREAKERS OR OPERATING HANDLES 14,000 AMPERES INTERRUPTING CAPACITY (SYM)

Number of Breakers	Catalog Number	Main Lug Amperes	Box Size
12	XPB2-123L1	100	A
18	XPB2-183L1	100	A
24	XPB2-243L1	100	B
24	XPB2-243L2	225	B
30	XPB2-303L2	225	D
36	XPB2-363L2	225	D

Compliances:

UL, cUL Classified Enclosure
UL Standard 1203
CSA Standard C22.2 No. 30

Class I, Groups B, C, D
Class II, Groups E, F, G
NEMA 4, 7, 9

How to order: Specify catalog number, operator handles and circuit breakers as separate items. Single pole breakers use 1 handle space, 1 handle. 2 pole, 2 spaces, 1 handle. 3 pole, 3 spaces, 1 handle. Unused spaces will be plugged. Top feed standard.

Approvals:

Enclosure Certifications



E81696



Circuit Breaker Power Distribution Panel Boards

Explosionproof and Dust-Ignitionproof

8A-6

MODIFICATIONS AND OPTIONS

Branch Breakers - Operating Handles - Components

BREAKER OPERATOR HANDLES INSTALLED IN XPB2 PANEL BOARDS

Catalog Number	Description	Weight Each
XPB2-H1	For 1, 2 or 3-pole GHB breaker	1/4 lb.

BRANCH CIRCUIT BREAKERS INSTALLED IN XPB2 PANEL BOARDS: BOLT-ON THERMAL MAGNETIC BREAKERS

Catalog No.	Description
XPB2-1*	1 pole GHB breaker (available in 15-100 amp) 277 volt A.C.
XPB2-2*	2 pole GHB breaker (available in 15-100 amp) 480 volt A.C.
XPB2-3*	3 pole GHB breaker (available in 15-100 amp) 480 volt A.C.

*Add ampere rating of the branch breaker when ordering.

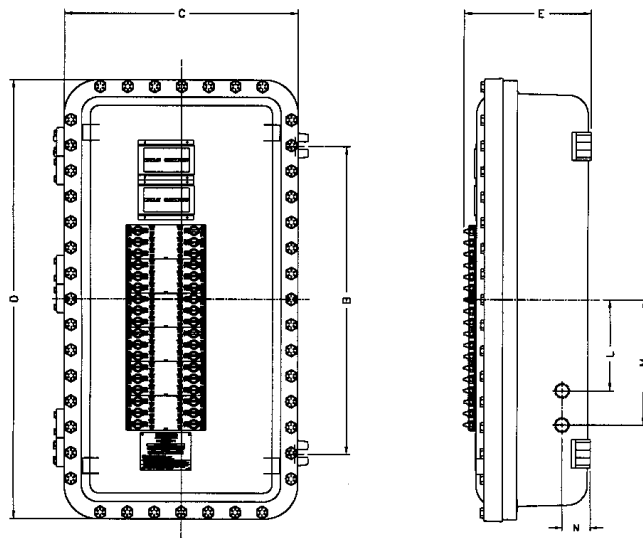
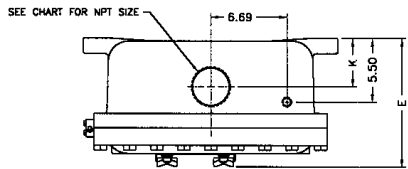
OPTIONAL FEATURES MODIFICATIONS:

Suffix Letter	Description
E	Breather Drain (not type 4)
EE	Breather and drain (not type 4)
L1	Epoxy Coating Outside
L2	Epoxy Coating Inside/Outside
NP	Lamacoid Nameplate
CU	Copper Bus Bar
Q	Quad-Lead Bolts

Circuit Breaker Lighting and Distribution Panel Boards

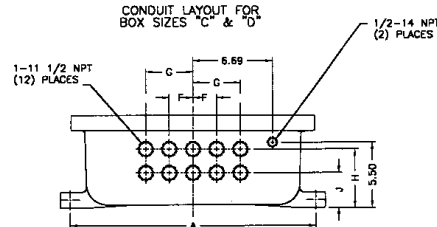
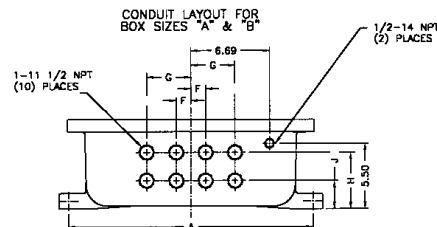
Explosionproof and Dust-Ignitionproof

ENCLOSURE DIMENSIONS & DATA SHEET



CONDUIT ENTRIES

Enclosure Size	Conduit Entries			
	1/2" NPT	1" NPT	2" NPT	3" NPT
A	Top	(1)	—	(1)
	Side	—	(2)	—
	Bottom	(1)	(8)	—
B	Top	(1)	—	(1)
	Side	—	(2)	—
	Bottom	(1)	(8)	—
C	Top	(1)	—	(1)
	Side	—	(2)	—
	Bottom	(1)	(10)	—
D	Top	(1)	—	(1)
	Side	—	(2)	—
	Bottom	(1)	(10)	—



Box Size	Internal Dimensions	(A) Mtg Width	(B) Mtg Height	(C) Overall Width	(D) Overall Height	(E) Overall Depth	Mtg. Bolt Size
A	161606	19 3/4	11	20 7/8	20 7/8	11	5/8
B	162406	19 3/4	18 3/8	20 7/8	28 7/8	11 1/2	5/8
C	162806	19 3/4	22 1/2	20 1/2	32 1/2	10 3/4	5/8
D	163406	19 3/4	27	20 1/2	38 1/2	10 3/4	5/8

Box Size	F	G	H	J	K	L	M	N	Weight lbs.
A	1 1/4	3 3/4	4 3/4	2 3/8	3 5/8	1	3 1/2	2 1/2	160
B	1 1/4	3 3/4	4 3/4	2 3/8	3 5/8	3	5	2 1/2	220
C	2	4	4 15/16	2 15/16	4 3/16	5	7	2 1/2	235
D	2	4	4 15/16	2 15/16	4 3/16	8	11	2 1/2	285

8A-7